

# ALASKA DIVISION OF HOMELAND SECURITY & EMERGENCY MANAGEMENT



## SITUATION REPORT

25-064 March 5, 2025

Toll-Free 1.800.478.2337

Anchorage Area 907.428.7000

SEOC 907.428.7100

<p><b><u>SEOC Preparedness Level</u></b> Level 1-Routine Operations</p>	<p><a href="http://ready.alaska.gov">http://ready.alaska.gov</a></p>	<p><b><u>National Terrorism Advisory System:</u></b>  <a href="#">Read the NTAS Bulletin here</a></p>
<p><b><u>Maritime Security (MARSEC)</u></b> Level:1- Minimum Appropriate Security Measures</p>	<p><b>WHO Novel Coronavirus Pandemic (COVID-19):</b> <a href="#">2019 Novel Coronavirus</a></p>	<p><b><u>Alaska Military Installation Force Protection</u></b>  <b><u>Level:</u></b> FPCON Bravo</p>

(Significant changes from previous situation reports are red.)

**Significant Issues:** None

### **Department of Health (DOH):**

For current information, see: <https://health.alaska.gov/dph/Pages/default.aspx>  
<https://health.alaska.gov/dph/Emergency/Pages/prepared/default.aspx>

### **NTAS Bulletin:**

The U.S. Department of Homeland Security issued an updated National Terrorism Advisory Bulletin on May 24, 2023. The current and expired bulletins can be viewed at the below link.

<https://www.dhs.gov/national-terrorism-advisory-system>

### **Travel Alerts and Conditions:**

For current driving conditions, dial 511 or visit: <https://511.alaska.gov/>

### **Barry Arm Landslide / Tsunami Risk:**

For the latest information on the Barry Arm Landslide and Tsunami risk, click here:

<https://dggs.alaska.gov/hazards/barry-arm-landslide.html>

### **Earthquakes:**

United States Geological Service (USGS) Earthquake Information: <http://earthquake.usgs.gov/>

National Tsunami Warning Center: <http://tsunami.gov/>

### **Alaska Volcanoes:**

**Great Sitkin Alert Level: Watch** and Aviation Color Code: **Orange**

**Mt. Spurr Alert Level: Advisory** and Aviation Color Code: **Yellow**

For Alaska Volcano updates, go to: <https://www.avo.alaska.edu/>

### **Air Quality Index (AQI) Advisories:**

For the most up-to-date Air Quality Index Advisories:

<http://dec.alaska.gov/Applications/Air/airtoolsweb/Home/Index>

### **Spills of Oil and Hazardous Substances:**

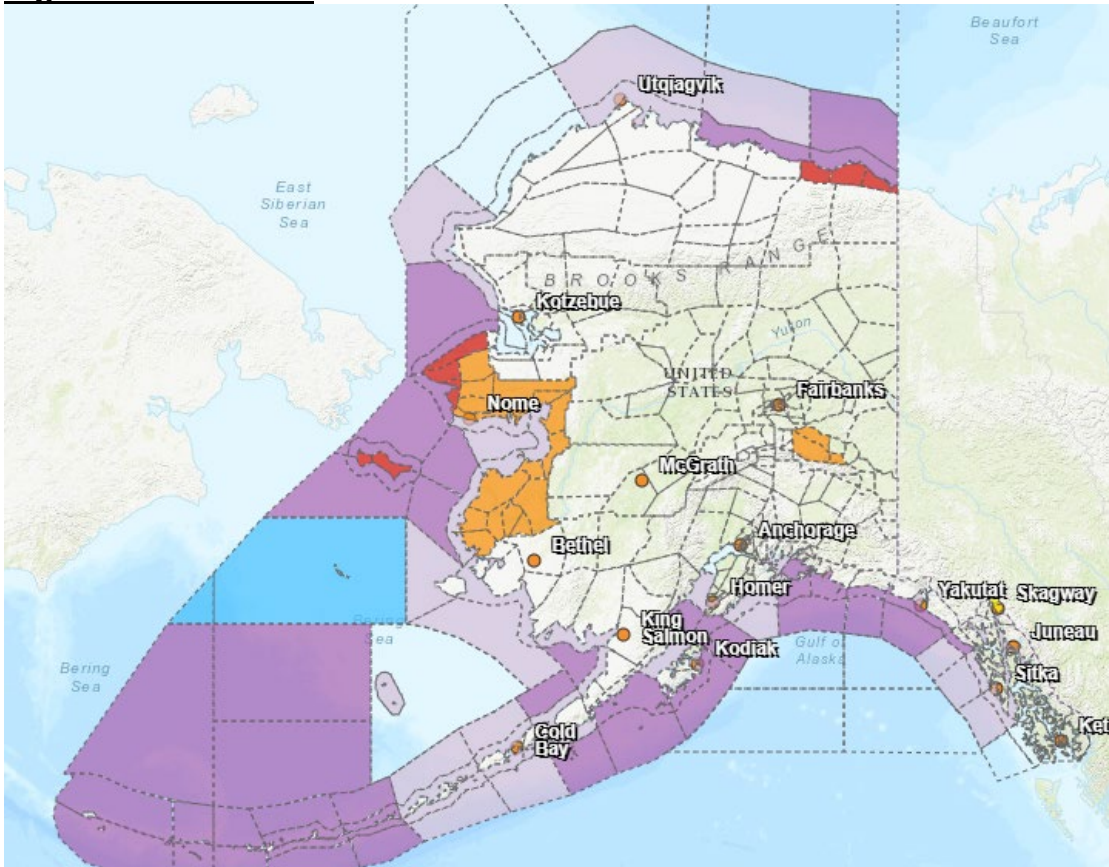
The Alaska Division of Environmental Conservation (ADEC) Spill Prevention and Response page is located at: <https://dec.alaska.gov/spar/>

### **Alaska Cyber Security Information:**

State Employees may sign up for cybersecurity notifications and alerts at:

<https://oit.alaska.gov/security>

### **Significant Weather:**



**Winter Weather Advisory: in effect till 6pm today**

Southern Seward Peninsula Coast; Interior Seward Peninsula

**Winter Weather Advisory: in effect till midnight tonight**

Lower Yukon River and Yukon Delta Coast

**Wind Weather Advisory: in effect till 6am Thursday**

Delta Junction

**Wind Advisory: 6am today till 6pm Thursday**

Eastern Alaska Range North of Trims Camp

**Blizzard Warning: in effect from 5am Tuesday to noon Thursday**

Shishmaref; Bering Strait Coast; St Lawrence Island

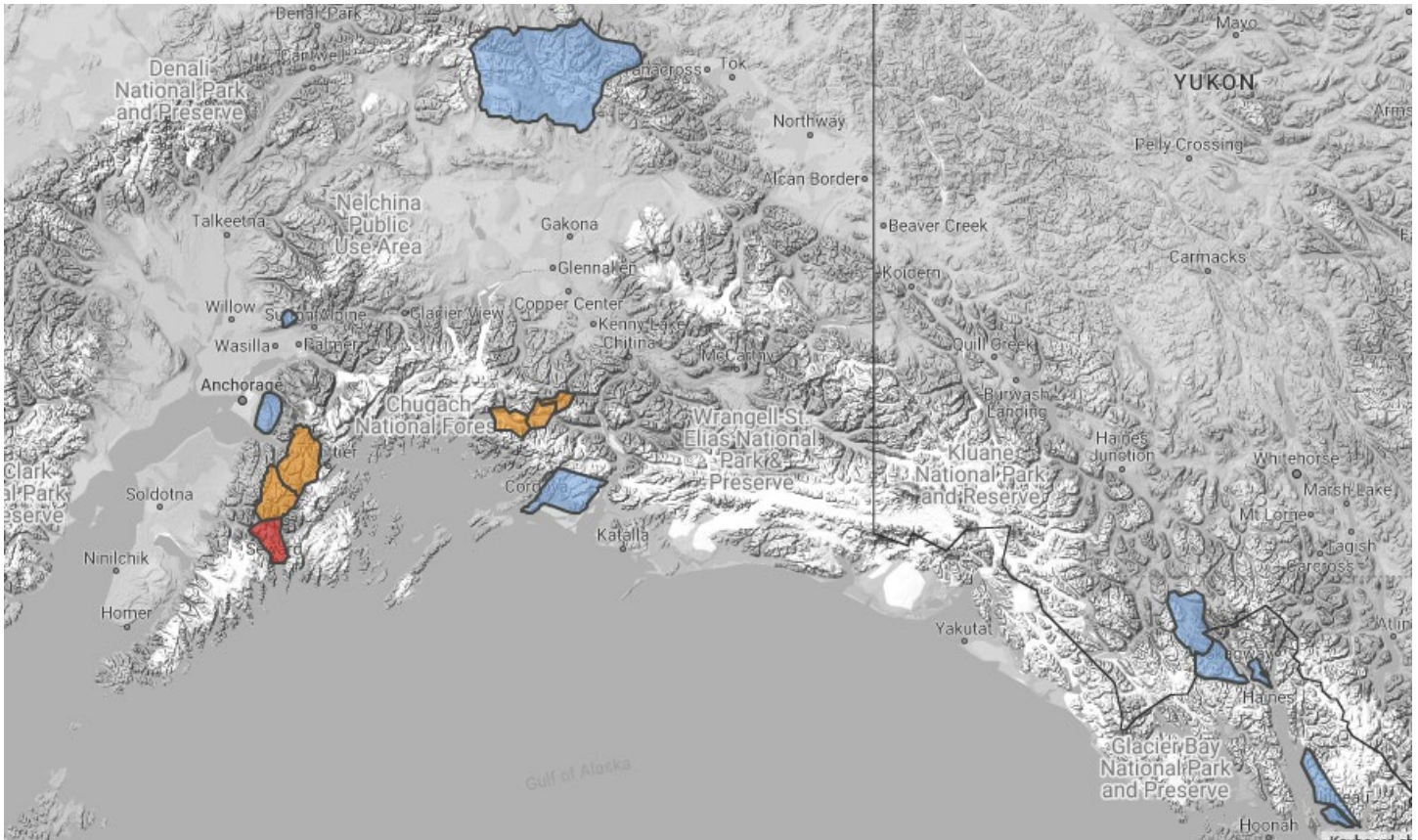
**Blizzard Warning: In effect from 6am today till 3pm Thursday**

Eastern Beaufort Sea Coast

For more information and the most current weather, Watches / Warnings / Advisories go to:

<https://weather.gov/arh/>

## Avalanche Conditions:



**Turnagain Pass** – Considerable 1,000' to 2,500, Considerable above 2,500'

**Summit Lake** – Moderate 1,000' to 2,500, Considerable above 2,500'

**Seward and Lost Lake** – **Considerable 1,000 to 2,500', High above 1,000'**

**Valdez Maritime and Intermountain** – **Considerable above 3,000'**

**Continental** – **Considerable above 4,000'**

**Hatcher Pass** –Low at all levels.

For more information and the most current avalanche conditions, go to: <https://alaskasnow.org/>

**The Next Situation Report** will be on **March 6, 2025**. An interim report will be prompted by a significant change in the situation or the threat level. This report is posted on the internet at

<https://ready.alaska.gov/sitrep>.

**To register for email distribution, PLEASE go to:**

<http://list.state.ak.us/mailman/listinfo/dhsem.situation.report>.

Direct questions regarding this report to the SEOC at 907-428-7100 or [seoc@alaska.gov](mailto:seoc@alaska.gov).